



MISSION STATEMENT

Animal Aid is committed to helping to create a society in which both humans and animals are treated with respect and compassion.

VALUES

What an organisation values reflects how it interacts with its customers and key stakeholders. These values set the tone for staff participation, staff selection and help define the values of the organisation itself, while providing direction and inspiration to our people on a daily basis.

The values that we embrace are:

Integrity
Determination
Respect
Compassion & Empathy
Leadership

ANIMAL AID PHILOSOPHY

Animal Aid has a clear vision and commitment to the ideal of animals and humans living in harmony, and to take a leadership role in achieving the best outcome for animal welfare. Animal Aid operates as an “Open Door” shelter and never refuses an animal in need and will only euthanase any animal as a last resort. Animal Aid recognises its responsibility to the community to re-home only temperamentally sound and healthy animals and to achieve a rehoming program that provides quality of life for animals and their new owners. Animal Aid is a pro-active shelter focused on working with other community organisations and stakeholders to develop practical solutions to problems associated with animal welfare and management. Animal Aid’s business arms and staff commit to reflecting this philosophy.

CHAIRMAN’S REPORT

Animal Aid has continued to deliver the highest standard of care and maintain its respected reputation in spite of the past year being a very challenging time for the organisation.

Lack of effective leadership in the senior management contributed to an inadequate oversight of financial management, poor staff morale and at times a dysfunctional organisation.

With a new Board of highly experienced Directors, a new CEO, (Mark Menze) with a proven track record in business and management. After a restructuring of several staff positions, a confident and co-operative culture is being re-established to enable Animal Aid to continue to deliver the highest level of service to achieve its core business within a responsible and realistic financial framework.

While the Board now provides strategic direction to ensure that the organisation fulfils its purpose, I wish to express my sincere thanks to our dedicated staff, our generous donors, magnificent volunteers and adopters who continue to support our ethics and ideals in animal welfare. Special thanks also to our interim CEO (Kirsty Watts) whose experience enabled our new CEO to “hit the ground running”.



Without their support, Animal Aid would struggle to deliver its range of great services.

We have planned and delivered a three staged process to restore effective and efficient administration which has encompassed an assessment and re-negotiation of fixed costs of utilities, garbage and telecommunications, a re-assessment of the overall structure of the organisation and staff rosters.

In spite of the challenges during the past twelve months, we have delivered good outcomes in accommodating 3075 dogs and 2045 cats. We reunited 2244 lost animals with their family and rehoused 834 dogs and 1306 cats. Some very pleasing results have been achieved in finding homes for 81 other companion and farm animals such as rabbits, guinea pigs, goats and poultry, as well as successful surgical rehabilitation of animals.

CHAIRMAN'S REPORT CONT.

Georgina is an outstanding example of the ethical philosophy that underpins Animal Aid.

We continue to play a vital role in using our animals and expertise of our staff to help many in the community who have fallen on hard times are at risk or are disabled. These services remain "under the radar" of the wider community but they are services we provide, of which, I'm very proud.

I was able to organise a visit by Bill Bruce, a world renowned Canadian expert on the welfare of domestic animals and community education that we shared with Shire of Yarra Ranges and Maroondah Council. This enables our organisation to continue to play a leading role in the treatment and management of companion animals.

While my focus has been to stabilise the organisation and ensure financial

viability over the past twelve months, I am acutely aware of the need to ensure our physical infrastructure will meet the needs of future demands.

To this end we have reappraised the plans previously developed for future planning and have unanimously decided that they are not achievable in terms of costs nor warranted in terms of capacity. We will therefore plan a more modest development that will enable us to continue to deliver best practice into the future. We remain committed to continuing to raise funds in order to achieve this.

It has been a privilege to serve as Chairman of an organisation where dedicated people contribute to the wellbeing of so many animals and in doing so enrich our communities.



GEORGINA'S GOT HEART

Georgina arrived at Animal Aid as an unclaimed stray from a regional pound at only four months of age, seemingly young and healthy. However upon veterinary exam a loud heart murmur was detected. Further x-rays and an ultrasound of her chest were taken and showed she had an enlarged heart, occupying most of her chest, a condition she was born with and that would ultimately shorten her life significantly.

Surgery to correct this condition can be quite risky as it involves close dissection and work near the heart and major blood vessels. Performing this surgery would normally be something completely unachievable for Animal Aid due to the significant cost and the need for a specialist Veterinarian.

Animal Aid and Georgina, would like to thank our community partners for helping to save her precious life. Together with Animal Aid's Dr Adele Scannell, their voluntary efforts and our



Special Surgery Fund this surgery was made possible. This fund is always in need of financial assistance. Also thanks to Sue Hatfield for giving Georgina the best chance to recuperate in her home and to Hills Science Diet for keeping her belly full.

Now fully recovered and placed in a loving new home, Georgina has a long and happy life ahead of her, and has as much chance of living to a ripe old age as any other dog.

ANIMAL AID – OUR PEOPLE

Animal Aid has 35 full and part time staff and also recruits casual employees to meet the increased demands at peak times such as Christmas/New Year's period and the school holidays.

Our staff are our ambassadors and a reflection of the ethos of this dynamic organisation, dedicated to creating better outcomes for the animals so desperately in need of our care. Each day they are reinvigorated by the pride and ownership they take in achieving our mission.

“Every day at Animal Aid everyone makes a difference, even in the smallest way. For me, working with nervous or un-socialised cases and seeing how they grow and blossom is incredibly rewarding. The best part is the adoption, sending them on their way home is just amazing.” Stacey Dunne, Animal Attendant.



Volunteers

Our honorary staff members are an integral part of our organisation. With a volunteer to staff ratio of around ten to one it is clear that they are an incredible resource for us and we rely on them daily in all facets of our operations.

Monthly volunteer introduction sessions are run to encourage new volunteers to join the ranks and decide what role would suit them and how much time they feel they can give. Every volunteer effort is worth its weight in gold to us, so why not come along to the next session, there is full list of introduction dates listed on our website animalaid.org.au.

ANIMAL AID – OUR SHELTERS

In Australia today there is a serious imbalance in the number of available animals and the number of responsible homes. This imbalance is why Animal Aid exists. Every day we are there to provide shelter and a second chance to these stray and unwanted animals and our open door policy means that we never turn an animal in need away.

With shelters located in Coldstream, Bairnsdale and Sale, we directly service four Municipal Council pound contracts and open our doors to unclaimed animals from seven regional and rural councils. These animals would otherwise have been euthanased.

Many of the animals that we receive come to us through no fault of their own, perfect in every way. Others have been scarred by their past experiences and take extra effort to prepare them for their future. This is what Animal Aid does best!

The three R's of animal sheltering are, Reunite if possible, if not Rehabilitate and ultimately Rehome. We put significant effort into getting this process right through animal rehabilitation and post adoption training programs. Our aim is to ensure that the animals in our care will only be in a shelter once in their life.

Caring for around 6000 deserving animals each year is a big job and we take on our role as their custodians with dedication and determination. Primarily

the animals we care for are cats, dogs, rabbits, and guinea pigs, but we also cater for pigs, goats, sheep, ferrets and poultry. We are constantly looking to improve our results and the way we care for these animals, both through our procedures and our facilities.

The year at a glance ...

- On average 185 animals found new homes each month across our three shelters.
- Our cat adoption rates have grown but reclaim rates remain low.
- Our overall save rate for both dogs and cats is something that, as an open door shelter, we are very proud of and we will continue to strive to further improve these figures across the board.
- 70 individual animals received corrective procedures thanks to the Special Surgery Fund.
- 78 emergency accommodation cases presented for a variety of reasons including domestic violence, mental health and drug related issues and homelessness.

SASSY SHELLEY



Unfortunately Shelley watched many other cats get adopted, while she was continually overlooked. We featured Shelley on Animal Aid's Facebook page a number of times and then sent her out on foster at Claws N Paws Pet Supplies, hoping that a different environment and contact with other people might increase her chances. However, Shelley became stressed and developed an eye infection and was transferred back to the shelter cattery. The poor girl wasn't having much luck!

After 221 days her perfect match arrived and Shelley was finally adopted!

Shelley's new mum Melinda tells us that 'Shelley took a while to settle in to her new home, but now that she has she could not have fit in any better! She is very cuddly (surprise! surprise!) and sits on the couch with me most nights for a cuddle. She purrs so loudly it is hard to hear the TV over her sometimes! She is already a well-loved member of our family! Thank you!'

Three year old Shelley came to Animal Aid East Gippsland as a stray, and in true Tortoiseshell style she proved to be a handful! Sassy Shelley was not for everyone; when she was in a good mood she would accept pats, but when she wasn't a little swipe of her paw would let everyone know to leave her be. Despite her cheekiness, Shelley had a soft side and like all of the animals in our care, she was just looking for someone to show her love and affection.

ANIMAL AID – OUR SERVICES

Animal health and wellbeing

- The clinic administered 4200 vaccines to dogs, cats, rabbits, sheep and goats during the year, both privately owned and in the shelter.
- Over 1800 animals were desexed, including both welfare and private patients.
- Vet clinic staff performed some 3000 health checks on shelter patients, providing them with veterinary assessment, vaccinations and parasite control treatments, as well as treating any illnesses and injuries.
- An average of approximately 350 private patients were seen each month, with ever increasing demand from the community for the high level of veterinary care provided by our staff.
- More than 1300 microchips were implanted, giving each animal a form of permanent identification, and the best chance of being reunited with their family in the event of separation.

Grooming service

- 3425 shelter and private clients were groomed this year. We have seen heart breaking cases where dogs are so matted the only option is to shave them completely.
- Our Salon has continued to work at capacity grooming between 10 to 14 dogs, and the occasional cat or rabbit each day.

Animal Aid Boarding Kennels and Cattery

- Our boarding facility cared for 3340 dogs and 730 cats, and with over 4000 animals in total this figure is on par with recent years.
- 426 new clients used our services which we hope will become regulars for future years.
- As a result this made the department responsible for a significant injection of income to the Shelter areas.

ANIMAL AID – SUPPORT PROGRAMS



Special Surgery Fund- 70 cats and dogs were able to be rehomed after receiving corrective surgical procedures thanks to this life saving fund.

ART- Animal Rehabilitation Training continues to modify unwanted behaviours in dogs seeking adoption, improving how they present in the kennels and increasing their chances of making a well rounded family pet that is a pleasure to own.

Mates for Inmates – a pilot program, in partnership with Melbourne City Mission, where Animal Aid helped facilitate educational development and life skills to women nearing the end of their incarceration. Unruly dogs were trained, cared for and prepared for adoption at the Dame Phyllis Frost Centre in Ravenhall for a six week period.

Pets in Peril - our Pets in Peril program offered emergency accommodation to 40 pets of women escaping domestic violence this year. We also housed 38 pets belonging to people suffering from mental health and drug related issues as well as homelessness.

Foster Parents Program – every year around 1000 animals will need to be housed temporarily in a foster home. Whether it is that they are too young to be adopted, recovering from a serious injury or not coping with the shelter environment. The time that they spend with their foster family is vital to their success in the future. We are indebted to the 40 plus families who open their hearts and homes to animals in need of foster care.

COMMUNITY SUPPORT

Animal Aid does not receive any Government funding and is only able to achieve such wonderful outcomes because of the incredible level of support we have from the community.

Our volunteers are instrumental in helping us to get the job done but the ways in which we receive assistance are many and varied.

Corporate volunteering projects

Our Corporate Volunteer participation rate continued to grow this year with 32 companies sending 333 of their willing staff out to our Coldstream facility to undertake a wide range of volunteering efforts from painting and gardening projects, as well as direct animal care and performing administration tasks. We encourage and look forward to growing the level of engagement from the corporate sector in the future.

Community Fundraising

Animal Aid always welcomes interest from individuals and community groups to fundraise on our behalf. This year we have been overwhelmed by the number of school groups that have chosen Animal Aid as their nominated charity for class projects. Their results were fantastic with not only food and bedding collections that have blown us away but also some significant financial contributions have been made as well. Thank you!

There are lots of ways to fundraise for

Animal Aid, free dress days, bake sales, take up a sporting challenge and get you friends and family to sponsor you, the list is endless. So go ahead, do it for the animals!

Events

Our annual Trivia Night continues to be a highly anticipated event that once again raised nearly \$30,000 dollars in much needed funds. This year also saw us venture back into the outdoor events arena with the inaugural Pet Picnic that took place at Lillydale Lake in March. It was a great day and we plan to make it a permanent fixture on the calendar.

Throughout the year our Animal Aid Promotional Team are out and about at community festivals, pet expos and school fetes, spreading the word about our work and increasing awareness of animal welfare issues.

Opportunity Shops

Our four Opportunity Shops located in Bairnsdale, Blackburn, Croydon and Lakes Entrance continue to be significant contributors, both in the efforts of the volunteers who work there and the income that they generate. The animals are of course the ones that ultimately benefit from their tireless dedication.

We are so grateful for the hard work they do and the pride with which they present their stores and strive to increase their income. Thank you!

RISING TO THE CHALLENGE

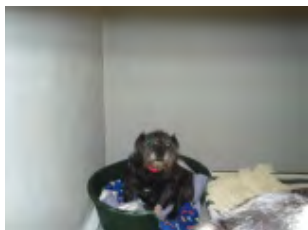
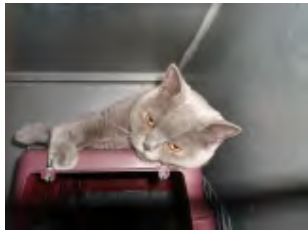
Animal Aid Gippsland faced many challenges this year but when the fires hit the Maffra/Hayfield area on the morning of Friday January 18th we knew this would be a major event.

The Wellington Shire Local Laws Team Leader rang our Gippsland Branch Manager Debby Goddard at 6.00am in the morning advising that the shelter was going to be used as a safe area for animals affected by the fires. By 9.00am the 63 animals that were currently at Sale were on their way to Coldstream and Bairnsdale. Volunteers and staff had the kennels and cat pens cleaned and ready to use by 10.00 am. Over the next 5 days we had 115 animals coming and going from the shelter. We were a Noah's ark of animals with cats, dogs, chooks,

rabbits, sheep, goats, budgies and cockatiels all in our care.

Coldstream's kennel staff and head vet Dr Elise Vogt were on standby at the Gippsland shelter just in case our numbers were overwhelmed. Animal Aid worked with the Wellington Shire Council to secure additional accommodation at another premises but luckily we were able to cope with the intake.

The fires have had a big impact on the Gippsland region with confidence very low. Thankfully all but two families that we dealt with were able to save their homes, so most of the fleeing families and their pets were happily reunited once the event had passed.



ADDITIONAL WAYS YOU CAN HELP

Supporting our Appeals

Animal Aid runs two major appeals each year to raise funds to care for the animals that need our assistance, as well as asking for financial and in-kind support for particular needs pertinent to the current requirements of our shelters.

Thank you very much to the many loyal and generous individuals who have donated to our Christmas and Tax appeals, wish list items and bedding and food drives. Without you we would not have been able to create such wonderful outcomes for the vulnerable animals in our care.

Monthly and Regular Giving

Regular giving is a very practical way of showing support and we are incredibly grateful to the 200+ individuals who chose to commit to monthly or fortnightly contributions. I can't stress how important this reliable income is to us and the stability and confidence it provides.

This type of giving truly makes a difference to our ability to rescue, reunite, rehabilitate and rehouse lost and homeless animals.

Workplace Giving

Workplace giving allows you to donate to Animal Aid through your payroll. Your pre-tax donation is automatically

deducted from your gross salary each pay cycle and some employers will even match your gifts. It is the simplest way to make your contribution.

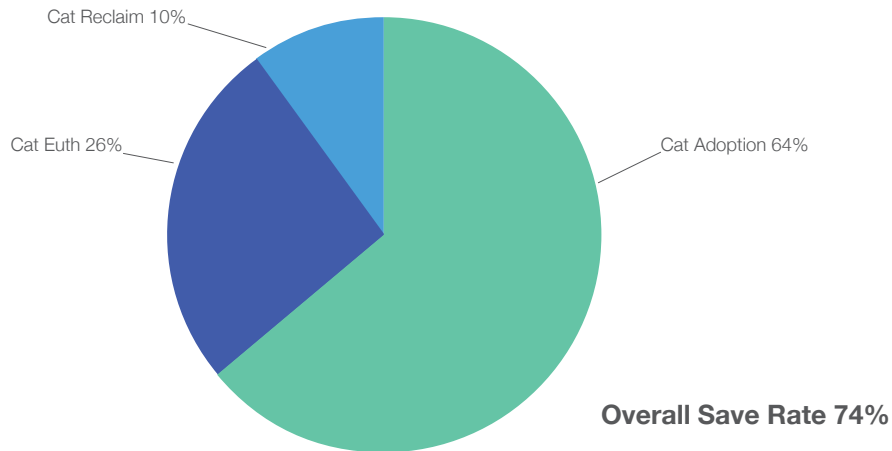
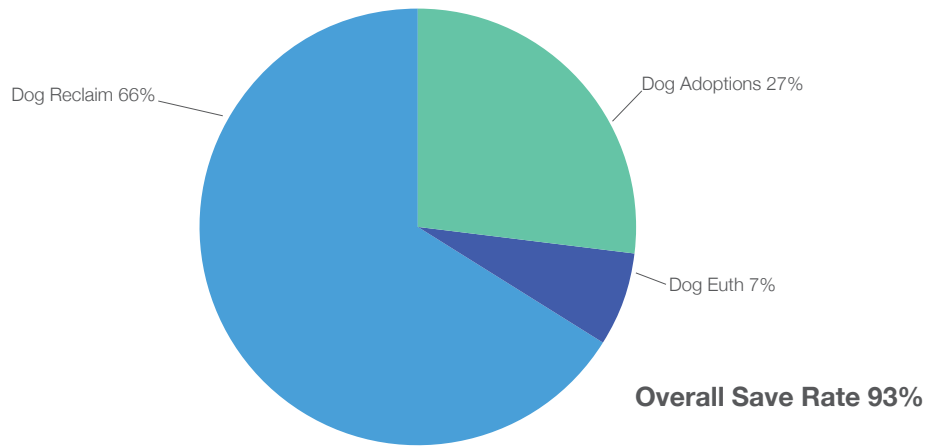
If you are an employee, why not talk to your employer and see what is possible in your workplace? If you are the boss then what's stopping you?

Make workplace giving something that your company can be proud of.

Facebook

We are so excited to see our Facebook fan base reach over 7000 this year. These fantastic supporters have been a great network for raising awareness about adoptions, events, and in kind donations for the shelters. If you're not yet a Facebook fan, you can "like" us at www.facebook.com/Victoriananimalaid

ANIMAL STATISTICS



FINANCIAL REPORT

Animal Aid would like to acknowledge and thank Saward Dawson Chartered Accountants for their comprehensive and concise financial audit and support.

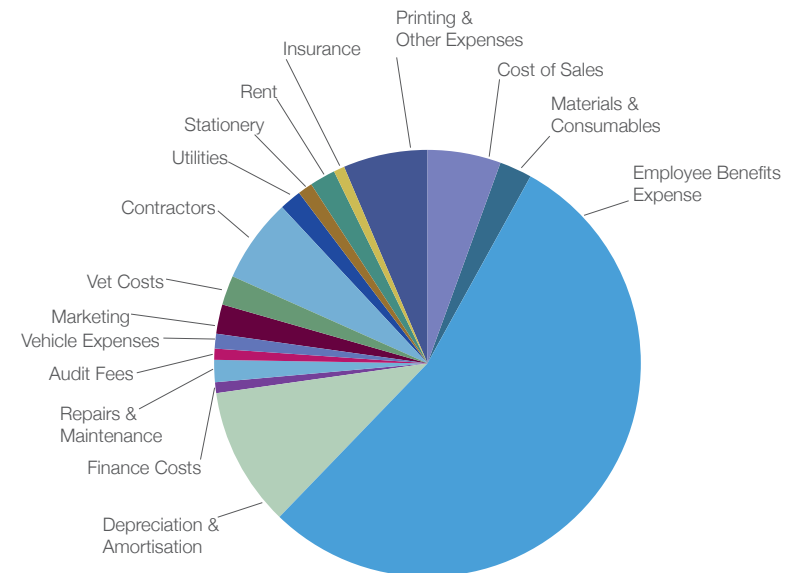
The comprehensive loss of \$1.051M is impacted by **a)** A reduction in expected revenue from bequests; down from FY12 by \$628,090. **b)** A write down of land and buildings at (\$430,578) and **c)** Depreciation and amortisation costs at \$450,199; up from \$282,698 FY12.

The Directors recognise the considerable loss for FY13 and have put in place actions to address the ongoing profitability of Animal Aid. Some of these action include:

- The appointment of an experienced financial controller.
- Streamlining process to reduce wage costs.
- Placement of permanent staff in lieu of contractors, temporary staff and casual staff.
- More favourable supply arrangements with sound purchasing processes.
- The implementation of robust cash handling processes.
- Selling of assets excess to operational requirements.

Refined profit and loss statements and cash flow budgets are now in place which show a positive cash flow and profit for FY14.

- The appointment of a new and highly experienced Chief Executive Officer.



INCOME STATEMENT

Victorian Animal Aid Trust
 ABN: 80 004 260 244
 Statement of Profit or Loss and
 Other Comprehensive Income
 For the Year Ended 30 June 2013

	2013 \$	2012 \$
Revenue	3,449,279	3,253,532
Other income	247,588	1,031,468
Cost of sales	-243,586	-217,614
Raw materials and consumables used	-105,998	-125,286
Employee benefits expense	-2,337,335	-2,195,159
Depreciation and amortisation expense	-450,199	-282,698
Finance costs	-32,752	-35,471
Repairs and maintenance	-81,366	-95,915
Accounting and audit fees -	-35,500	
Motor vehicle expense	-46,276	-33,777
Promotional	-89,760	-98,413
Vet costs	-100,973	-163,250
Contractors	-277,535	-193,458
Utilities	-67,931	-58,904
Printing and Stationery	-51,499	-42,837
Rent	-82,871	-94,850
Insurance	-35,612	-26,726
Loss on disposal of assets	-872	
Other expenses	-274,246	-827,773
Loss for the year	-617,444	-207,131
Other comprehensive income		
Items that will not be reclassified subsequently to profit or loss		
Revaluation of land and buildings	-430,578	
Net fair value gain/(loss) on re-measurement of investments in listed shares available for sale	-3,507	-10,209
Total comprehensive loss for the year	-1,051,529	-217,340

BALANCE SHEET

	2013 \$	2012 \$
Assets		
Cash and cash equivalents	150,270	296,299
Trade & other receivables	84,909	58,116
Financial assets (term deposits)	384,337	425,992
Inventories	53,440	97,475
Non Current Financial Assets (Shares)		87,503
Property, plant and equipment	2,511,987	3,228,074
Total Assets	3,184,943	4,193,459
Liabilities		
Trade and other payables	330,033	349,111
Short and long term borrowings	292,480	333,593
Current and non current provisions	298,249	195,045
Total Liabilities	920,762	877,749
Net assets	2,264,181	3,315,710
Equity		
Reserves	407,922	842,007
Retained Earnings	1,856,259	2,473,703
Total Equity	2,264,181	3,315,710

BOARD MEMBERS

The directors present their report on Victorian Animal Aid Trust for the financial year ended 30 June 2013. Directors were in office since the start of the financial year to the date of this report unless otherwise stated.

Current Directors

The Hon Fran Bailey
Chairman
Appointed December 2012

Kathryn Schoonveldt
Vice Chairman
Appointed October 2012

Alexandra Levine
Secretary
Appointed February 2013

Paul Dargie
Appointed 2004

Glenda Walker
Appointed March 2013

Past Directors

Amber Anderson
Resigned April 2013

Rick Houlihan
Resigned August 2013

Denise Redja
Resigned April 2013

Mark Menze
Resigned July 2013

Craig Lutwyche
Resigned February 2013

Gareth Reynolds
Resigned December 2012

Toby Carrington
Resigned December 2012

DONATIONS

Mr & Mrs Wayne & Joy Alford
Miss Lisa Allenby
Ms Rosemary Ash
Ms Jo Bailey
Ms Lynette Baines
Mr John Barns
Mrs Maureen Barns
Miss Elizabeth Barton
Mr Paul Bates
Ms Colleen Batson
Ms Kaye Beckman
Ms Elizabeth Beddoe
Ms Michelle Bendall
Ms Wendy Bennett
Ms Fiona Berry
Mr Kevin Binns
Ms Alana Birchall
Ms Marie-Claire Blin
Ms Ruth Boniface
Miss Andrea Boothroyd
Ms Gloria Bourke
Ms Kaz Branecki
Ms Sharon Brennan
Miss Joan Bridges
Ms Jennifer Burley
Miss Nicole Butler
Mrs Ann Byrne
Ms Lisa Bywaters
Ms June Cabena
Dr Debbie Calnon
Mrs Kathleen Cassidy
Mr Clive Catlow
Mr & Mrs Andrew & Patricia Chacksfield
Bi-Set Pty Ltd
Miss Diana Cholewick
Ms Kara Ciezki
Ms Elizabeth Clarke
Mr Alan Cobb
Ms Danni Coles-Teuwsen
Ms Sally Collins
Mr & Mrs Michael & Carol Collins
Mrs Helen Comport
Mrs Helen Comte
Ms Anne Conway
Mr Ross Cooper
Miss Linda Cooper-Lothian
Ms Clarissa Cowland
Mr & Mrs John & Wendy Craig

Dr Catherine Cresswell
Dr Tamara Culnane
Ms Rosslyn Dahlmann
Mr Graham Davies
Mrs Julia Davis
Ms Irena Davis
Miss Samantha Davison
Ms Annette Day
Ms Dee De Beauchamps
Mr David Deery Din-Dins Pet Food
Ms Christine Dean
Ms Sally Dean
Ms Kylie Dean
Ms Margaret Dempster
Ms Nathalie Detragiache
Mrs Truus Deutsch
Miss Christine Devlin
Ms Susan Dickens
Mr Jason Dodson
Mr Denis Doyle
Miss Elisabeth Drake
Mrs Michelle Driscoll
Ms Anitra Dunshea
Mr & Mrs Bruce & Pam Duperouzel
Dito Nominees Pty Ltd
Mr Garry Durbin
Mrs Debby Eeles
Ms Kim Ellard
Mrs Lorraine Elliott AM
Ms Trish Elliot Shine Australia Pty Ltd
Miss Nadine Ellis
Mrs Miranda Ellul
Ms Gayle Facey
Ms Sarah Fern
Mr & Mrs Mark & Lee Fisher
Mr Richard Flanagan
Dr Patrick Forbes
Ms Claudia Ford
Ms Lorraine Frank
Ms Michelle Frizon
Mrs Alison Froud
Ms Adriana Garbayo
Mrs Marie Gardner
Ms Jennifer Gearing
Miss Danielle Germech
Mrs Debra Gilbert
M Judy Gillett
Mr Michael Gillett

Ms Margaret Grace
Mr Jason Graham
Ms Georgina Green
Mrs Margaret Griffin
Mrs Francine Hall
Ms Patience Harris
Ms Stephanie Hayhurst
Mr & Mrs Ian & Sue Hayward
Ms Michelle Hedges
Mrs Glenys Hellier
Mr Stephen Heselwood
Mrs Merril Hewitt
Mrs Toni Hipkiss
Mrs Sue Hoffman
Mrs Enid Holman
Ms Patricia Holmes
Mr & Mrs John & Rosemary Homewood
Mr & Mrs Mark & Trudi Hooper
Mr Stephen Horvath
Ms Val Hoyle
Mrs Anne Hudson
Mr And Ms Greg & Helen Huggins / White
Ms Teresa Hughes
Mr & Mrs David & Delene Hutchins
Mr & Mrs Robert & Lyndal Ihle
Mr Keith Inman
Miss Yuko Ishido
Ms Teresa James
Mr & Ms John & Ainslie Kendrick
Ms Joan Kerford
Ms Sharon Kershaw
Ms Marlene Ketjen
Ms Kira Kezia-Pearl
Ms Stephanie Kibby
Mr David Killen
Mrs Nancye Kimmenade
Ms Judy King
Mrs Dawn Klein
Mrs Ashleigh Knight
Mr & Mrs Jeff & Ailsa Kuiper
Mr Nick Kuyken
Mr Damian Larobina
Mr Heath Lee
Dr Ashley Lee
Mr & Mrs Mark & Sheila Lewis
Ms Monica Lobascher
Ms Karen Lochhead

DONATIONS CONT.

Mrs Doris Lowry
Ms Hellena Lozanovski
Ms Betty Lynch O A M
Mrs Angela MacRae
Ms Elva Maroney
Mr Louis Marshall
Ms Kate Marshall
Mr Donald Matheson
Mr & Mrs Allan & Stella Matthews
Mrs Shannon May
Ms Sally McDonald
Ms Lynda McGrath
Mrs Diane McLeod
Mr & Mrs Terry & Judy McShane
Ms Heather Michaels
Mr Ben Michell
Mr & Mrs Clive & Hellen Millis
Clive Millis Motors Pty Ltd
Miss Maggie Mills
Mrs Marian Mitchell
Ms Kathryn Moir
Ms Ruth Mooney
Mr Bob Morrow
Ms Karen Mulder
Mrs Shelley Murray
Ms Pat Neill
Ms Irene Nelke
Ms Helen Newman
Mr Andrew Noller
Mr Kevin Noller
Mr Steven Noller
Ms Jenny O'Donnell
Ms Gillian Olesky
Ms Catherine O'Mahony
Mrs Joanne O'Neill
Ms Colette O'Reilly
Ms Miriam Orwin Orwin Investments Pty Ltd
Ms Kerrin Osborn
Mrs Anne Palamarczuk
Ms Marnie Pantano
Ms Kate Pearce
Ms Susan Pitts
Miss Hazel Porter
Ms Berwyn Prentice
Ms Megan Pritchard
Ms Lisa Proctor
Ms Wendy Pruis 3-Tech Pty Ltd Pty Ltd
Ms Tracey Rankin

Ms Susan Reagan
Mr Francis Reiss
Ms Simone Revell
Ms Jodie Ricardo
Mr Peter Riddell
Mr & Mrs Darren & Christine Ritchie
Ms Elizabeth Roberts
Mrs Beth Robins
Mrs Madeline Rolls
Mr & Mrs Mark & Roberta Rosedale
Mr & Mrs Daniel & Brenda Roytel
Ms Nicola Rushworth
Ms Angela Rutter
Mr & Mrs Brendan & Julie Ryan
Ms Melissa Ryan
Mr Michael Sarah
Ms Valerie Sayce
Mr Daniel Schmidt
Ms Alaina Schultz
Mrs Patricia Scott
Ms Cynthia Scott
Ms Judi Scott
Ms Kerry Sell
Mrs Linda Shambrook
Mr Paul Sillato
Ms Hilary Simons
Mr & Mrs Ernie & Wendy Sinfield
Ms Elaine Small
Mrs Caroline Smith
Mrs Diane Smith
Ms Angela Smith
Mrs Diane Smith
Ms Wendy Sorenson
Ms Emma Speirs
Mrs Valerie Sturrock
Mr & Mrs D Somers
Mr Frank Sullivan
Ms Liz Sutherland
Mrs Wanda Tammark
Mr Craig Tarling
Ms Vivian Tee
Ms Teresa Thai
Mr Peter Thompson
Mr Derek Thurgood
Mr Richard Todd
Ms Pauline Turner
Miss Sophie Tyler

Mr & Mrs Johannes & Doreen Van Spanjen
Mr & Mrs Julian & Caroline Vear
Ms Katherine Veltri Rae-Line Pty Ltd
Mr Brett Vorhauer
Ms Jeanette Walton
Mr & Mrs Wayne & Glenda Walker
Ms Jennifer Walker
Mr Geoff Wansbrough
Mrs H Wasykiw
Mr William Wellington
Mrs Gwyneth Wenlock
Mr & Mrs Peter & Barbara Wilkie
Mr Victor Williams
Ms Vivien Wilson
Ms Kelly Wilson
Ms Pauline J Withers
Mr & Mrs Robert & Ginny Woodhouse
Ms Jody Yandle
Mr Kel York
Ms Beverley Young
Ms Rebecca Yuncken

Community Groups

Croydon & District Obedience Dog Club

Trusts

AGMAL Family Foundation
The Bienvenu Foundation
Sheehan Birrell Foundation

Businesses

Petplan
Petstock
Rudducks
Methvens
Yarra Valley Motor Group
Dorset Gardens Hotel
Black Dog Wear
Bendigo Bank
Claws N Paws
Count Dogulas
Inspired Images
Goodwill Wines?
MegaPet Warehouse
Spitwater
Hills Science Diet
Ken Smith & Associates


animalaid
more than a shelter

35 Killara Road, Coldstream, Vic 3770
PO Box 34, Coldstream, Vic 3770
Ph: 03 9739 0300 | Fax: 03 9739 0400
enquiries@animalaid.org.au
www.animalaid.org.au